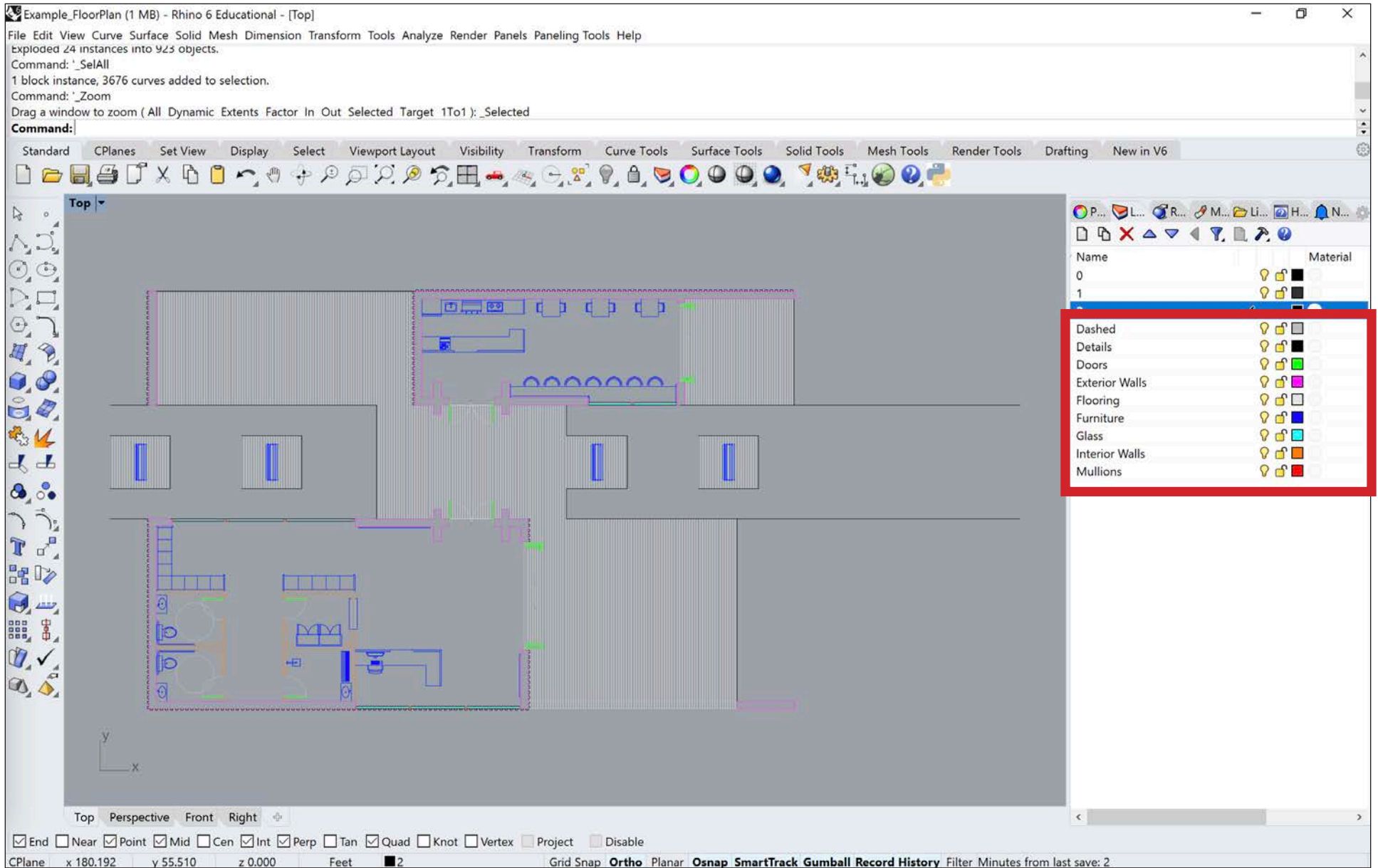
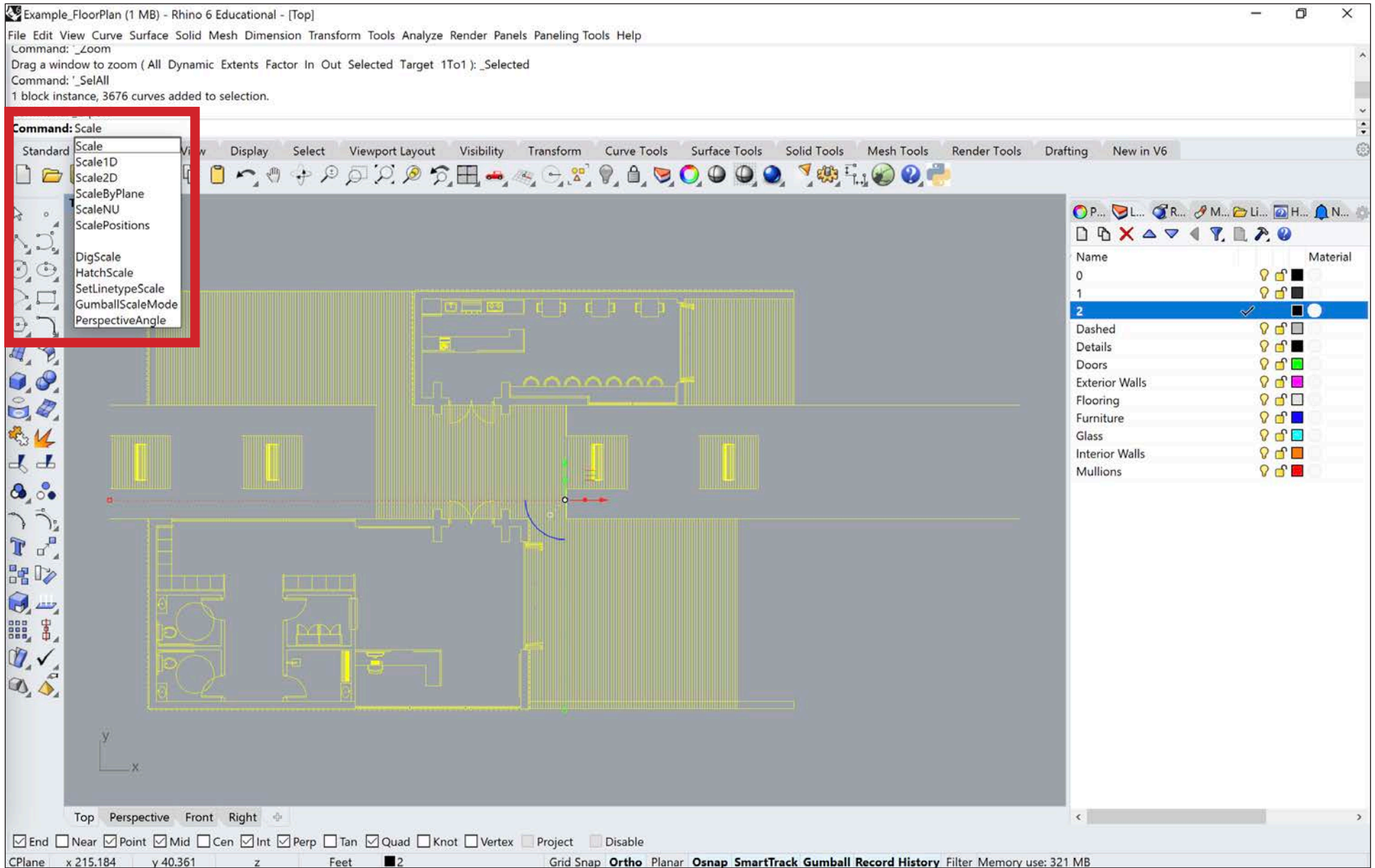


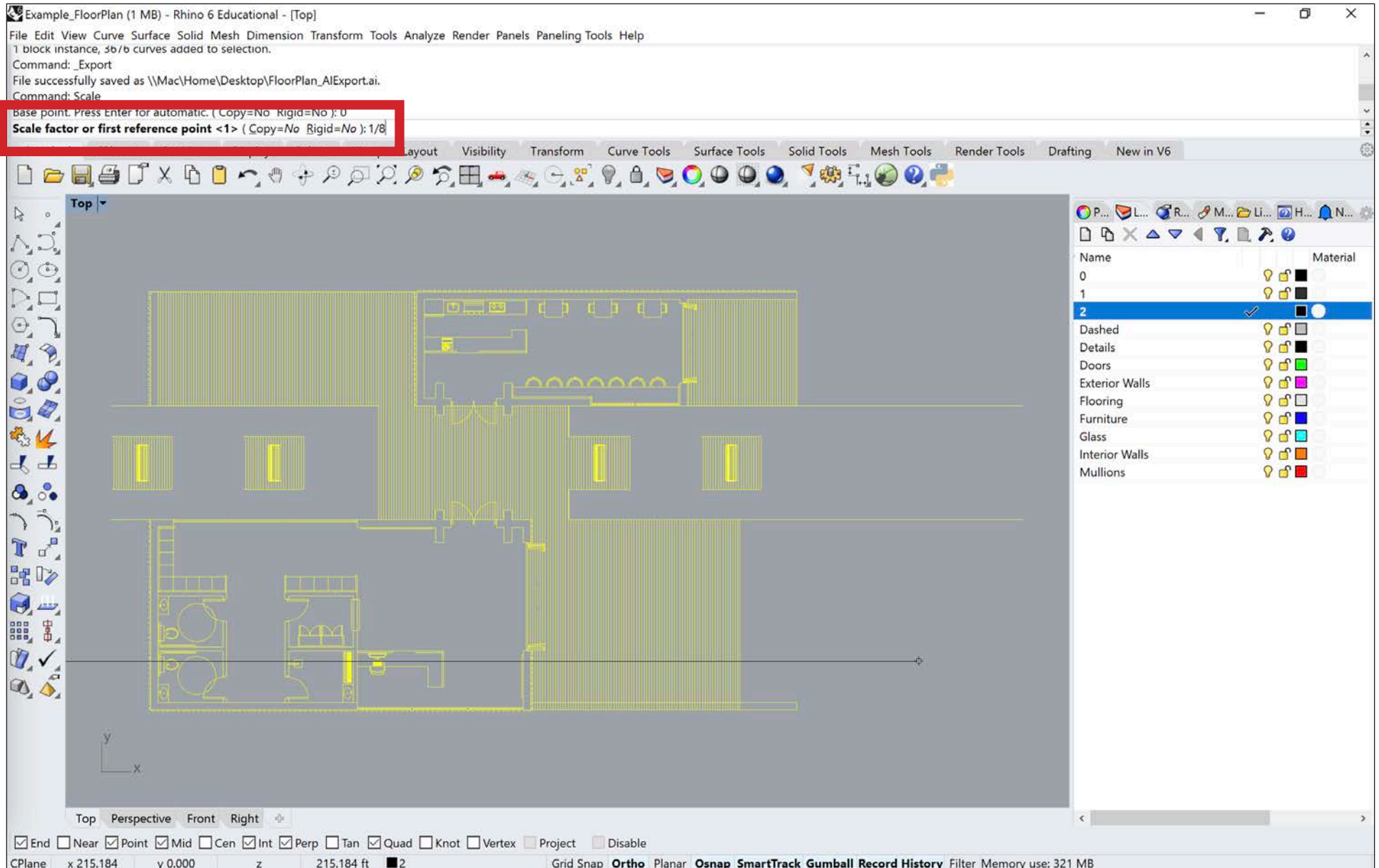
**EXPORTING  
DRAWINGS FROM  
RHINO3D AT SCALE**



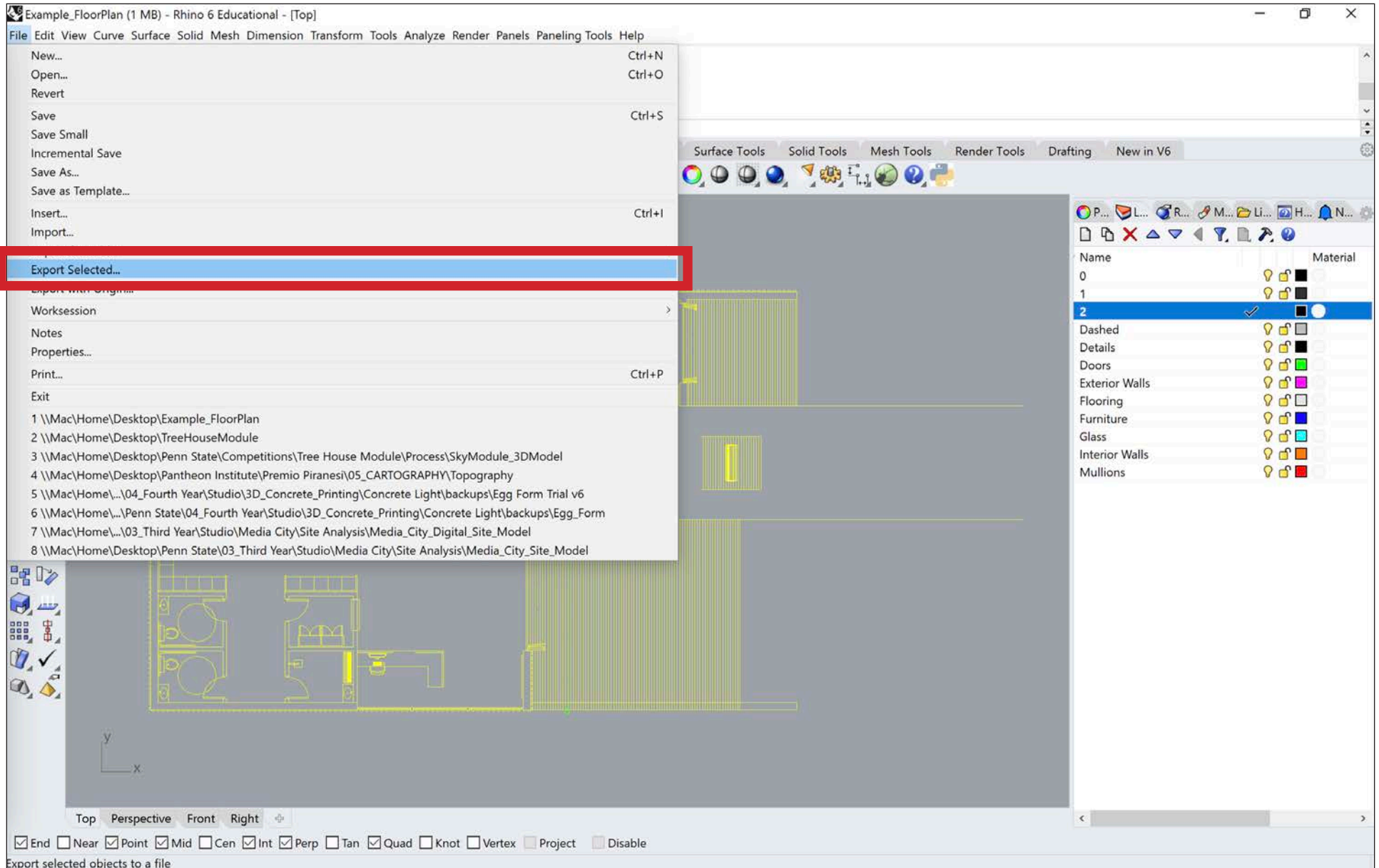
Starting with the finalized drawing (floor plan, section, elevation, etc.) separate all of the different elements into different layers based on their respective line weights. For each layer, change the color to a new color appearance which is not already being used. This will save a lot of time later on - when you go to line weight your drawings later.



Once everything has been separated onto their respective layers, you will want to scale the drawing to the desired architectural scale. Select the drawing you want to export and type 'Scale' into the command bar.

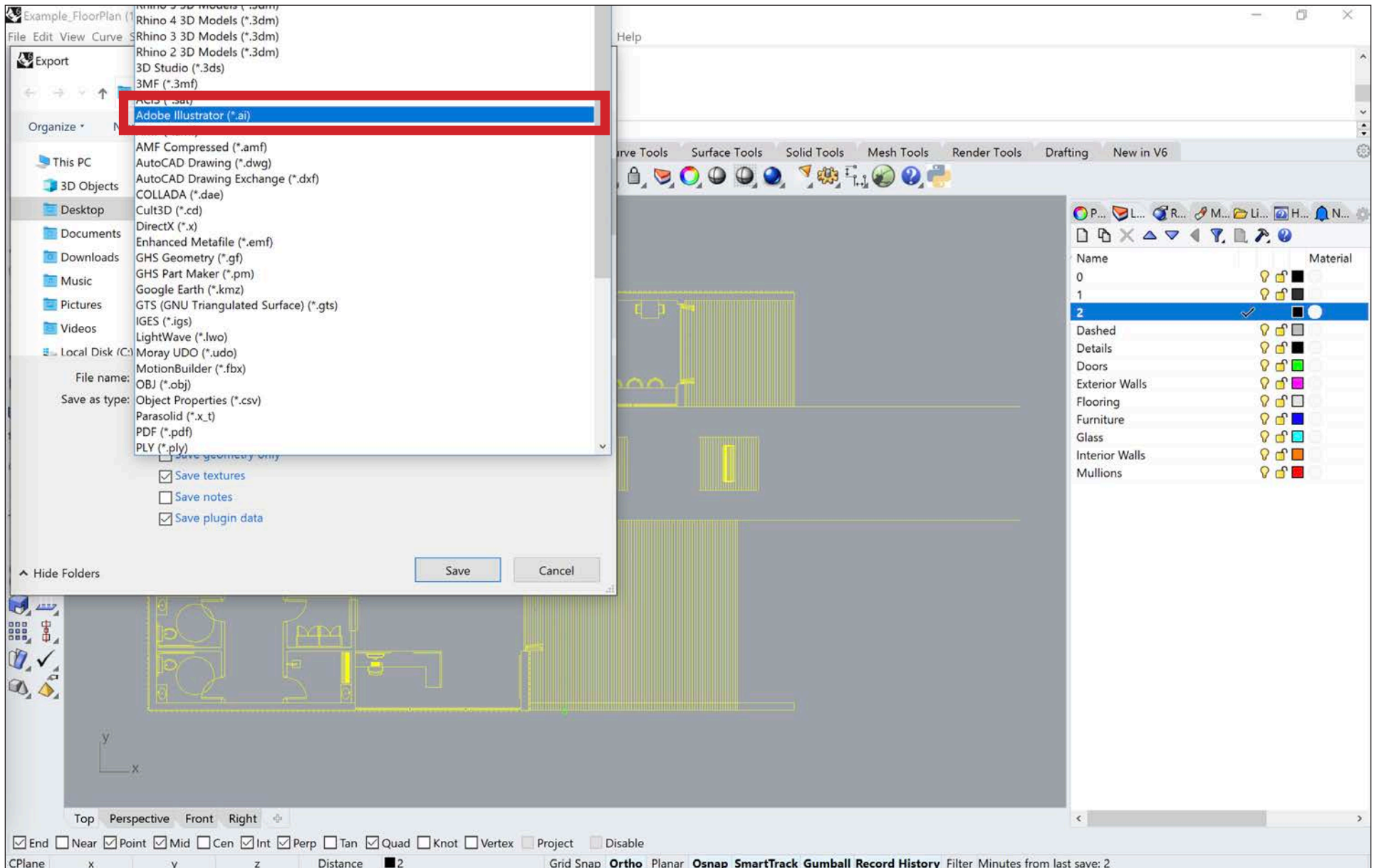


Choose a base point for the scaling procedure. Typically, it is easiest to use the origin (0,0,0) as the base point. Then you will want to scale the drawing by the desired architectural scale. For example, if you want your drawing to be at 1'=1/8" scale, then you will scale your drawing by '1/8', as seen in the image above. Similarly, if you want your drawing to be at 1'=1/4" or 1'=1/16", then you will scale your drawing by '1/4' or '1/16' respectively.

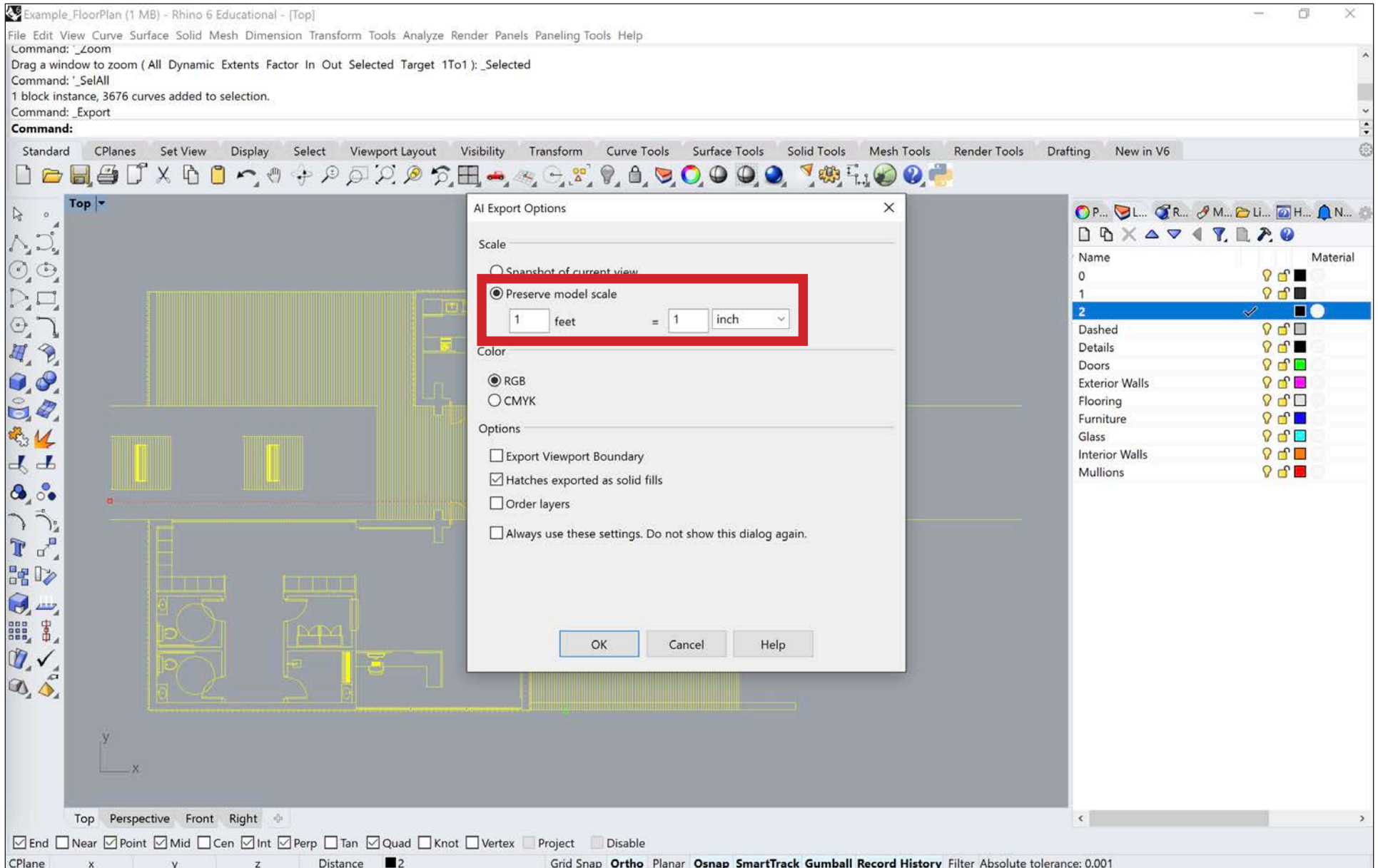


Once the drawing has been scaled to the proper architectural scale, select the drawing you want to export, go to 'File', and select 'Export Selected'. Do not simply type Export into the command bar, because that will export all object in your file. Using Export Selected will allow you to export only the drawings you have selected and nothing else.





After selecting 'Export Selected', an 'Export' window will appear. It will ask you to choose a file name and a location to save the exported file. Name the export file a name which you will be able to identify later. Typically, it is easiest to add the tag '\_AIExport' to the file name, so you can find it later. Make sure to change the file type to 'Adobe Illustrator (\*.ai)' before clicking 'Save'.



After choosing 'Save', an 'AI Export Options' window will appear. Make sure that 'Preserve Model Scale' is selected and that the units are set to '1 Feet' = '1 Inch'. This will convert the drawing from feet to inches, which exactly what we want for scaling the drawing to a specific architectural scale. All of the other options can be left as the default or as seen in the image above. Finally, click save to export the drawing as an Illustrator file.